


BARI

BRISBANE ARTIST RUN INITIATIVES

FESTIVAL

6TH-23RD
OCTOBER

PROGRAM 2016
WWW.BARI.COM.AU



WHAT IS AN ARI ?

f BARIFESTIVAL
@BARIFESTIVAL
WWW.BARI.COM.AU

Eli Lillis / Carl Street Collection 2016 / Image: Marc Pricop
Danny Smith / Kimberley series 2013 / Image: Marc Pricop

Artist Run Initiative (ARI) refers to any collaborative project run by artists to present their own and others projects and ideas.

ARI's play a vital role in the artistic climate of the city, providing an alternative platform to commercial and state run galleries, as well as a space for new and emerging artists to present experimental works. The development and support of these works locally is integral to new creative talent flourishing in Brisbane, building a strong and diverse arts culture in the city.

Brisbane has an incredibly unique ARI scene. Unlike other cities, the majority of artist run groups turn to ephemeral sites of display. The space under a Queenslander, a suburban garage, a garden shed, the back of a rental truck are all reimagined for one night shows. The act of going to an exhibition becomes an integral part of the experience, the apprehension of entering an intimate space made public, the social interaction, the ebb and flow of the work itself. Stepping outside of ideas of where and what contemporary art should be.

From 6th - 23th October, BARI festival opens a window to this artist run activity. With 20 events featuring over 50 artists, BARI offers a dynamic cross section of practices, taking place in a range of alternative venues. There will be music, exhibitions, performance based guided tours, tea sessions and roaming works, as well as sound and light based events.

Come and join us at the ARI led two part public forum, held at the Powerhouse on the 13th and 20th of October. Learn a little more about ARI's in Brisbane, where they're at now, and where they're going from here.

We hope you enjoy exploring the program, get inspired, be surprised! Make the most of the chance to be a part of a vibrant and varied community of Artist Run Initiatives.

Jaclyn Bates & David Don
Co - directors

THURSDAY 6TH OCTOBER



UNIQUE FORMS

PRESENTED BY:
Analogue Gallery

ARTISTS:
Jaala Alex
Emily Glover
James Hornsby
Jarrod Mahon

OPEN:
6:30pm - 10:00pm (opening night)
Thursday 6th October
(one night only)

ADDRESS:
259 Brunswick St, Fortitude Valley
(Entry via Greaser Bar), Brisbane.

ANALOGUEGALLERY.COM.AU

Unique Forms is an exhibition showcasing Brisbane based artists, exploring the abstraction and reduction of the human form through continuous line work, photography, collage and paint.

Unique Forms encourages the audience to create their own interpretation of the artworks, to connect with and discover organic shapes, not often promoted in our modern society.

Analogue Gallery is a creative-lead exhibition space, based in Fortitude Valley, Brisbane. Established in mid 2016, Analogue Gallery is dedicated

to supporting emerging and established artists, with an interest in creating ambitious and engaging new work.

Through our regular pop-up exhibition program, Analogue Gallery provides an accessible and professional platform for artists, rent and commission free, designed to support Brisbane's creative community. Shows are held the first Thursday of every month and applications are open year round for artists to exhibit.

Photo Title: Jaala Alex (Video still)
'I'm the girl with the body'.

SATURDAY 8TH OCTOBER

FUTURE PROOF

PRESENTED BY:
Boxcopy Contemporary
Art Space

CURATED BY:
Katherine Dionysius and
Amy-Clare McCarthy

ARTISTS:
Holly Bates
Spencer Harvie
Annie Macindoe
Matthew Sneesby

OPEN:
24th September -
22nd October

ARTIST TALKS:
4:00pm, Saturday 8th October

GALLERY OPEN:
12:00 - 6:00pm Friday & Saturday

ADDRESS:
282 Petrie Terrace,
Brisbane.

BOXCOPY.ORG

Future Proof brings together new work by four recent Queensland graduates: Holly Bates, Spencer Harvie, Annie Macindoe and Matthew Sneesby. Working across painting, sculpture, and video installation, the artists' materials are as diverse as their conceptual pursuits. Chosen for strength of practice rather than a thematic connection to each other, the selected artists demonstrate the breadth and diversity of work coming out of Brisbane's art schools. **Future Proof** provides an opportunity for the artists to show new work that they have been developing post-graduation.

Katherine Dionysius is an independent curator, art writer and editor. She is currently Head of Research at 89plus, an international research project co-curated by Simon Castets and Hans Ulrich Obrist and also works part-time as Curatorial Assistant at QUT Art Museum, Brisbane.

Amy-Clare McCarthy is the Visual Arts Coordinator at Metro Arts, Brisbane. She completed her Bachelor of Creative Industries (Honours) at Queensland University of Technology in 2010 and has also completed internships at MoMA PS1 and e-flux, New York.

Photo Title: Annie Macindoe.

SATURDAY 8TH OCTOBER

LAY DOWN YOUR SWORDS

PRESENTED BY:

NO COMPLY

ARTIST:

Kate Hallen

OPEN:

10:00am - 2:00pm
Monday to Saturday
12th September – 8th October 2016

ADDRESS:

6 Laurel St,
Toowoomba City
QLD.

With **Lay Down Your Swords** Kate Hallen brings a visual description to the “feeling of” panic when we become overwhelmed by a difficult situation. Her work expresses the spatial sensation of riding through panic, from the experience of having nowhere to go, to one of surrendering into weightlessness - without control. She captures the poignant beauty in this wrestling between human strength and vulnerability.

Photo title: Kate Hallen. 2016 *I want that you are always loved.*

SATURDAY 8TH OCTOBER

YONDER

PRESENTED BY:

Lost Movements, The Brisbane Collective, Bleach Tapes & BARI

OPEN:

6:00pm - Midnight
Saturday, October 8th
(one night only)

ADDRESS:

14 Helen St, Teneriffe,
Brisbane.

**TICKETS AVAILABLE
THROUGH EVENTBRITE AT
WWW.BARI.COM.AU/TICKETS**

Tickets: \$10

MUSIC:

Moses	Feuds
Goodbye Moon	AVAXA
Cloudy Tailor	Omegachild
FeelsClub	Soviet X-Ray
El Santo	Record Club

TILT BRUSH (VIRTUAL REALITY PAINTING/SCULPTING):

Dana Ferris
Lyndon Fry
Emmanuel Moore
Benny Pierce
Gus

ARTISTS:

Harley & Händer
Samantha Gilkes
Benny Pierce
Sloe Motion
Anna Elizabeth
Sarge Jhogenson
Kel Christiansen
Penny Lonie
Amy Crow
James Hornsby
ANDLIZZY
Jon Weber
Teens On Acid
PhotoWheeler
Bella Reboul
Cronk and Tonic
Rebecca Giles
Alice Kaps
Jeff Paton
Witte Art
Zena

PERFORMANCE:

Saara Roppola
Kimera Visual Theatre
Theatre of Thunder

Yonder is a collaborative multi-arts warehouse event curated by three Brisbane based arts organisations. Featuring performances from a number of emerging Brisbane bands, visual art exhibitions, live painting activations, skateboarding showcase and physical performances. Each of the contributing organisations have a history of producing innovative events supporting the emerging arts in Brisbane with a focus on inclusion and collaboration.

SATURDAY 8TH OCTOBER

SHIFT, WORK

PRESENTED BY:
BUSYBRICK

ARTISTS:
Erena Mercer
Jac Dyson

OPEN:
8-9th, 15-16th October

Times & location released
on Facebook

[FACEBOOK.COM/BUSYBRICKARI](https://www.facebook.com/BUSYBRICKARI)



Shift, Work aims to create and exploit cognitive dissonance as a method for reflection and social commentary. **Shift, Work** presents five video works as ephemeral, transitory performances that are activated through personal interactions that culminate in an exchange.

Video works are kept in five backpacks and taken to different locations throughout the BARI festival. The location of the work is specified and updated through social media with access to the work negotiated once found at each site.

The content of the video and its method of consumption aims to draw attention to the invisible social contracts we unconsciously use to determine the value of how we use time, how we choose our interactions with others and by extension how it might then determine our own personal worth.

SATURDAY 8TH OCTOBER

RUCKUS TERRIBLE TOURS

PRESENTED BY:
Ruckus

ARTIST:
Ruckus Crew & Friends Angela Peita,
Megan Bartholomew,
Martin Ingle, Scott Wings

OPEN:
3:00pm - 5:00pm
Saturday 8th October
3:00pm - 5:00pm
Sunday 9th October

ADDRESS:
Powerhouse City Cycle Stop
119 Lamington st, New Farm,
Brisbane.

**TICKETS AVAILABLE
AT EVENTBRITE THROUGH
WWW.BARI.COM.AU/TICKETS**

Tickets: \$16.80



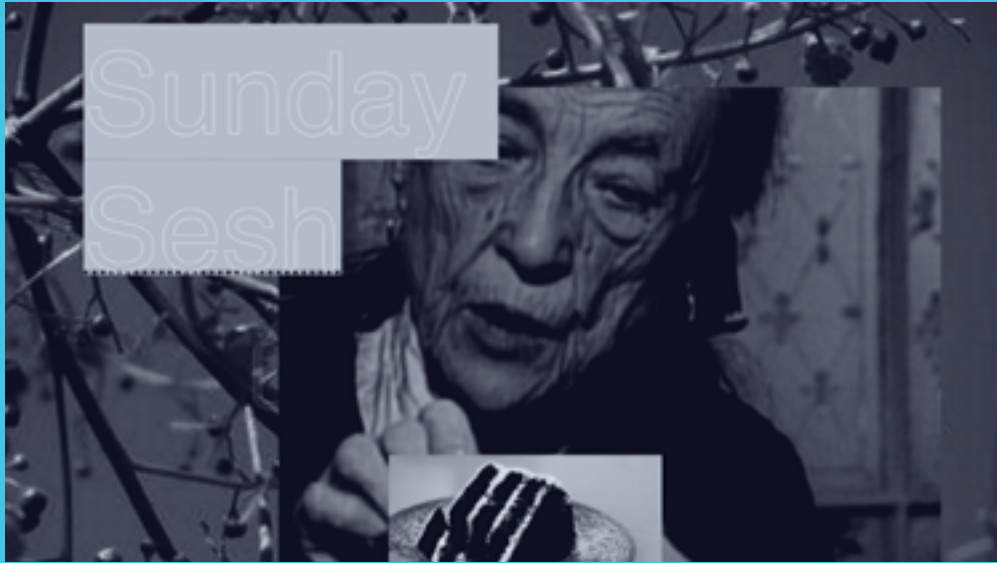
Ruckus presents the best way to experience an arts festival - on a city cycle with a bag of goon in the front basket. A Terrible Tour with Brisbane's finest wordsmiths, Ruckus will be your guide through all of the art things. We will explain what multi-disciplinary means (it's a type of rash ointment) and have you referencing Greek mythology in no time, just like Achilles did.

Ruckus will pick up adventurous ratbags from a specified location, hop on bikes, furiously pedal to performance locations, eat ravenously at picnic locations, be super confused at art locations, and question our own mortality at superiority at poking-dead-possums-with-a-stick-locations.

From the Powerhouse to the BARI hub - a Brisbane Tour. It's real 'Le Fanc'. Recommend bringing along ya bike. No bike? No worries, you can pick one up at the City Cycle stop at the Powerhouse.

Duration: approx 2 hours including light snack and drink. For more information, check out our Facebook page: [facebook.com/RuckusSlam/](https://www.facebook.com/RuckusSlam/)

SUNDAY 9th OCTOBER



SUNDAY SESH

PRESENTED BY:
DM ARI

ARTISTS:
Dhana Merritt
w/ Special Guests

OPEN:
2:00-4:00pm, Sunday 9th October
2:00-4:00pm, Sunday 23rd October

ADDRESS:
Plum Tucker
5 Enoggera Tce
Red Hill, Brisbane.

**TICKETS AVAILABLE
AT EVENTBRITE THROUGH
WWW.BARI.COM.AU/TICKETS
LIMITED SEATING**

Inspired by Louise Bourgeois and her Sunday salons where anyone was welcome to attend afternoon tea & discuss a work-in-process. Friendly critical discussion guided by Dhana Merritt and friends, accompanied by cake in a relaxed atmosphere.

SUNDAY 9th OCTOBER



BANANA SUNDAY - GOLD EDITION - ALL LOCAL LINE-UP

PRESENTED BY:
THE WALLS ART SPACE

ARTISTS:
Libby Harward (MZ Murri Cod)
Weeman3000, Gravel Samwidge,
2 Chevrons

BEATS, VISIONS AND BEERS BY:
Gravel Samwidge (Tweed Heads)
2 Chevrons (Tweed Heads)
Stone & Wood Beer (Byron)

OPEN:
3:00-7:00pm,
Sunday 9th October
(one day only)

ADDRESS:
4/18 Mountain View Avenue
Miami, Gold Coast.

[FACEBOOK.COM/THEWALLSGC](https://www.facebook.com/thewallsgc)

Banana Sundays are a social sound series on Sunday afternoons as The Walls presents sound artists, artists who play with sound and projections, VJs and noise makers. It's your chance to go a bit bananas before the start of the working week, and to indulge in some delectable delights as audio and visual currents flow in tune with the Coral Sea on our doorstep.

THURSDAY 13TH OCTOBER

BARI FESTIVAL PUBLIC FORUM 1

PRESENTED BY:

In Residence ARI
Inresidence-ari.com

Find out everything you've ever wanted to know about ARI's with two panel discussions in one night, featuring some of the most experienced – and some of the newest – members of the Brisbane ARI scene.

OPEN:

Thursday 13th October

6:30pm Panel one:
ARI: What, why, how?

7:30pm Drink break

7:45pm Panel two: Tracking change:
Brisbane ARI's past, present
& future.

ADDRESS:

Graffiti room,
Brisbane Powerhouse
119 Lamington St, New Farm
Brisbane.

EVENTBRITE REGISTRATION REQUIRED
WWW.BARI.COM.AU/TICKETS
LIMITED SEATING



TRACKING CHANGE: BRISBANE ARI'S PAST, PRESENT & FUTURE

This panel will look at the evolution of the Brisbane ARI scene, from the tough cultural climate of the 1980s to its re-emerging waves in the '90s, '00s and now. With representatives from various generations, the panel will question how each era impacts the next.

CHAIR:

Jenna Baldock (curator and writer)

PANELISTS:

Dianne Heenan (A Room)
Franz Ehmann (Soapbox)
Elizabeth Willing
(Accidentally Annie St Space)
Rachael Haynes (Boxcopy)
Dirk Yates (The Farm)

ARI: WHAT, WHY, HOW?

This panel will explore what an ARI is, why they exist, how they thrive in Brisbane, and whether there's an ARI model that's one-size-fits-all.

CHAIR:

Lisa Bryan-Brown (independent curator and writer)

PANELISTS:

Chloe Waters
(The Laundry Artspace)
Callum McGrath (Cut Thumb ARI)
Annie Macindoe
(CLUTCH Collective)
Peter Breen (Jugglers Art Space)
Dhana Merrit (DM ARI)

THURSDAY 6	FRIDAY 7	SATURDAY 8	SATURDAY 8	SUNDAY 9	THURSDAY 13
<p>6:30PM - 10PM</p> <p>UNIQUE FORMS Analogue Gallery Fortitude Valley</p> <p>OPENING NIGHT</p>	<p>10:00AM- 2:00PM</p> <p>LAY DOWN YOUR SWORDS No Comply - Toowoomba</p>	<p>4:00PM</p> <p>FUTURE PROOF Boxcopy Contemporary Art Space - Petrie</p> <p>ARTIST TALK</p> <p>6:00PM - 12:00AM</p> <p>YONDER Lost Movements & The Brisbane Collective & Bleach Tapes & BARI - Fortitude Valley</p> <p>ONE NIGHT ONLY</p> <p>TICKETED EVENT</p>	<p>SHIFT, WORK Busybrick- Times & locations released on Facebook (Saturday + Sunday)</p> <p>3:00PM - 5:00PM</p> <p>RUCKUS TERRIBLE TOURS Ruckus - New Farm</p> <p>TICKETED EVENT</p>	<p>2:00PM - 4:00PM</p> <p>SUNDAY SESH DM ARI- Red Hill</p> <p>REGISTERED EVENT</p> <p>3:00PM - 7:00PM</p> <p>BANANA SUNDAY The Walls Art Space - Gold Coast</p> <p>ONE DAY ONLY</p>	<p>6:00PM - 7:00PM</p> <p>BARI FESTIVAL PUBLIC FORUM 1 Brisbane Powerhouse</p> <p>REGISTERED EVENT</p>
FRIDAY 14	SATURDAY 15	SATURDAY 15	SUNDAY 16	WEDNESDAY 19	
<p>6:00PM - 9:00PM</p> <p>WALKING TO THE EDGE OF A SMALL CLIFF CLUTCH Collective - Teneriffe</p> <p>ONE NIGHT ONLY</p>	<p>6:00PM - 9:00PM</p> <p>THE SKIN TEAM Corflute - Teneriffe</p> <p>OPENING NIGHT</p> <p>6:00PM - 9:00PM</p> <p>THE PILE Cut Thumb Ari - Teneriffe</p> <p>OPENING NIGHT</p>	<p>SHIFT, WORK Busybrick- Times & locations released on Facebook (Saturday + Sunday)</p> <p>6:00PM</p> <p>TACTILUS UMBRAVI Backspace - Bowen Hills</p> <p>ONE NIGHT ONLY</p> <p>PERFORMANCE</p>	<p>SHIFT, WORK Busybrick- Times & locations released on Facebook (Saturday + Sunday)</p> <p>6:30PM - 9:30PM</p> <p>REAL LIVE NUDE The SX+ Collective - Fortitude Valley</p> <p>ONE NIGHT ONLY</p>	<p>8:00PM</p> <p>LIGHTENING FIELD The Laundry Artspace - Teneriffe</p> <p>PERFORMANCE</p> <p>ONE NIGHT ONLY</p> <p>6:00PM - 9:00PM</p> <p>BETWEEN YOU AND i FAKE estate - Brisbane CBD</p> <p>OPENING NIGHT</p>	
THURSDAY 20	FRIDAY 21	SATURDAY 22	SUNDAY 23		
<p>6:00PM - 9:30PM</p> <p>SCRIBBLE SLAM Lincoln Savage - Fortitude Valley</p> <p>ONE NIGHT ONLY</p> <p>PERFORMANCE</p> <p>6:30PM - 8:00PM</p> <p>BARI FESTIVAL PUBLIC FORUM 2 Brisbane Powerhouse</p> <p>REGISTERED EVENT</p>	<p>6:00PM - 9:00PM</p> <p>DOES NEW YORK EXIST? ARI Remix - Teneriffe</p> <p>OPENING NIGHT</p>	<p>6:00PM - 9:00PM</p> <p>SHE'D SHED SHRED Kunstbunker - Ashgrove</p> <p>ONE NIGHT ONLY</p> <p>6:00PM - 9:00PM</p> <p>HOME 2 In Residence - Teneriffe</p> <p>ONE NIGHT ONLY</p>	<p>2:00PM - 4:00PM</p> <p>SUNDAY SESH DM ARI- Red Hill</p> <p>REGISTERED EVENT</p> <p>6:30PM - 8:30PM</p> <p>SUBMERGENCY: IMMERSIVE SOUND & SWIMMING EVENT Mesmerism Inc -Spring Hill Baths</p> <p>ONE NIGHT ONLY</p>		

FRIDAY 14TH OCTOBER

THE SKIN TEAM

PRESENTED BY:

Corlfute

ARTISTS:

Rhiannon Dionysius
Peter Kozak

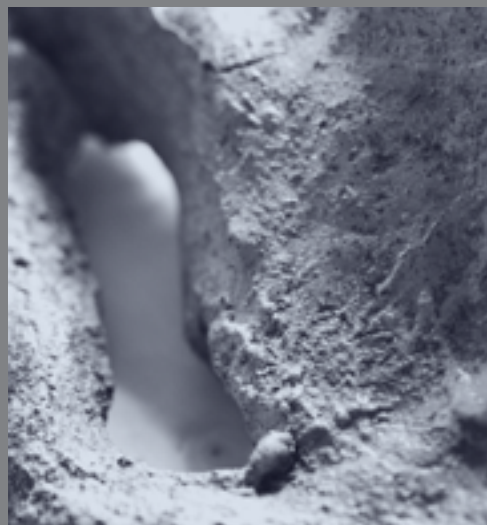
OPEN:

14th – 22nd October.
6:00pm, 14th October (Opening night)
Gallery Open: every day (except
Sundays) from 11:00am – 2:00pm

ADDRESS:

14 Helen St, Teneriffe, Brisbane.

[FACEBOOK.COM/CORFLUTEARI](https://www.facebook.com/corfluteari)



The Skin Team brings together the work of two artists, Rhiannon Dionysius and Peter Kozak, and considers the juxtaposition and underlying links – or lack there of – in their works. Dionysius is an interdisciplinary artist who works primarily in sculpture, and Kozak's current practice focuses on video and installation. This collaboration was founded through notions of the body in art, mind/body dualism, vulnerability, and experience. The work of these two artists explores the relation between flesh, vision and thought. The works do not seek to represent the world. Their purpose is to render sensations upon the audience that are symptomatic of being-in-the-world, (the translation given to Heidegger's Dasein.) The images and sculptures in this exhibition give expression to sensations that are ordinarily inhibited from our perception. THE SKIN TEAM invites the audience to experience the sensations that Dionysius and Kozak employ in rendering the sensations of relations between self and other(s) and self and world(s).

Ashleigh Ralph 2016. Photo Title: Rhiannon Dionysius. 2015. Filly

FRIDAY 14TH OCTOBER

THE PILE

PRESENTED BY:

Cut Thumb Ari

ARTIST:

Sarah Rudledge

OPEN:

14th – 22nd October.
6:00pm, 14th October (Opening night)
Gallery Open: every day (except
Sundays) from 11:00am – 2:00pm

ADDRESS:

14 Helen St, Teneriffe, Brisbane.

[FACEBOOK.COM/CUTTHUMBARI](https://www.facebook.com/cutthumbari)

The Pile is a work emerging from two weeks spent studying a mass of dumped rubbish in a Reservoir shopping centre car park. During this time video, writing, performance and public readings were employed to contemplate the pile as a living abject body that was in a perpetual state of re-write as things were added or removed before the area was eventually cleared and fenced off.

By performing the gesture of sitting with the pile, and thereby taking up the position of watcher or invigilator, the artist proposes that there is something worth minding. This simple and seemingly pointless act represents a desire to re-instate value to the post-consumed matter. The sitting is continued at a later date after the rubbish has been removed adding a layer of absurdity as the figure appears isolated but purposeful in the minding of nothing or what was. The resulting work consists of a four channel video installation and a performance work, Sound Pile, which involves a collective reading of texts developed from time spent observing the site.

Sarah Rudledge is a visual artist based in Melbourne, Australia. She works with observation, video, performance, sound and text to investigate and formulate responses to specific sites. Usually located within familiar urban and outer-urban environments, sites are chosen based on their potential to reveal something hidden or unspoken about the everyday.

www.sarahrudledge.com

Photo Title: Rudledge, Sarah. 2016. The Pile (Sitting The Pile #4), single channel video loop (video still)

FRIDAY 14TH OCTOBER



WALKING TO THE EDGE OF A SMALL CLIFF

PRESENTED BY:
CLUTCH Collective

ARTIST:
Benjamin Crowley

OPEN:
6:00 – 9:00pm, Friday 14th October
(one night only)

ADDRESS:
14 Helen St, Teneriffe, Brisbane.

**FACEBOOK.COM/
CLUTCHCOLLECTIVE**

Walking to the edge of a small cliff is a video installation by Brisbane-based artist Benjamin Crowley presented inside the CLUTCH Collective truck for BARI Festival, 2016. The work will be a reiteration developed from previous works created during Crowley's 2014 Iceland residency.

The video documents a gesture in which the artist kicks rocks off a small cliff into a river below. The performance is filmed from a point-of-view perspective and presented on a screen floating off the rear end of the truck body. The space will be accessible via steps on each side of the screen positioned to shine upwards. Light will illuminate the space and viewers from below as they approach the screen. The edge of the vehicle and the screen's distance from the ground heightens the virtual physicality and illusion of space.

Walking to the edge of a small cliff is formally structured to offer a kinaesthetic experience upon approach from within the truck's body. This participatory event causes the viewer to embody the forlorn gesture implied by the figure in the footage and become object and subject for spectators.

SATURDAY 15TH OCTOBER



REAL LIVE NUDE

PRESENTED BY:
The SX+ Collective

ARTISTS:
Kat Nancy
Saara Roppola
Francisca Vanderwoude
Amanda Wolf

OPEN:
6:30pm – 9:30pm,
Saturday 15th October
(one night only)

ADDRESS:
Analogue Gallery,
259 Brunswick St, Fortitude Valley
(entry through Greaser) Brisbane.

FACEBOOK.COM/XS.ONE/

SX+ is a collective of artists who aim to question contemporary definitions of sex-positivity and promote open discourse surrounding sex and sexuality through contemporary arts projects. We deal with themes as diverse as pornography, desire, queer identity, fetish, objectification, reproduction, and sex-work through an intersectional, feminist lens.

Continuing from our hugely successful premiere event, 'SX+: The Sex-Positive Art Show' (presented as part of Anywhere Festival Brisbane 2016), our exhibition for BARI festival is the first output of an experimental project centred on the strip club as a site for arts-based research. The artists of SX+ Collective will collide their studio practices with the adult entertainment industry, undertaking short 'residencies' and workshops within an adult entertainment venue in Brisbane.

Drawing on the art-historical relationships between sex-workers and artists, particularly within Post-Impressionism, the project seeks to both unearth and cultivate this as a contemporary discourse, aiming to disrupt binaries – highbrow/lowbrow, fantasy/reality, subject/object – through intersubjective collaborative processes.



Photo title: Courtesy the Artist Zoe Porter, Anomalies performance Strange Neighbour, 2016.

SATURDAY 15TH OCTOBER

TACTILUS UMBRAVI

PRESENTED BY:

Backspace

ARTISTS:

Zoe Porter

Hsin-Ju Ely

Live sound artist Exploko

OPEN:

6:00pm - 9.30pm Saturday,
15th October (one night only)

ADDRESS:

12 Brookes St, Bowen Hills
Brisbane.

Zoe is a Brisbane based interdisciplinary artist exploring primarily a drawing practice, which also extends into painting, installation, performance, sculpture, site-specific works and video.

Tactilus Umbravi will consist of a live collaborative performance bringing together drawing, sound, installation, video projection and contemporary dance. Depictions of animal-human hybrid's and non-human figures blur the boundaries between the real and imaginary, performer and audience. The performance and drawn works reveal an invented cosmology that feature recurring monstrous creatures that investigate the subconscious, states of transformation and which are also suggestive of a narrative that presents possibilities for other ways of being.

The dichotomy between Zoe's performance and its ephemera are highlighted in her work, the line between the action or the drawing is the focus. The windows of the space will be drawn and painted (and lit at night) tracing the creative processes of the performance after it has finished.

WEDNESDAY 19TH OCTOBER

LIGHTENING FIELD: A SONIC-BODY- DRAWING PERFORMANCE EXPERIMENT

PRESENTED BY:

The Laundry Artspace

ARTISTS:

Kellie O'Dempsey, Megan White
Luke Jaaniste

OPEN:

8:00pm, Wednesday 19th October
(one night only)

ADDRESS:

14 Helen St, Teneriffe, Brisbane.

Lightning Field brings together, for the first time, the diverse and fluctuating practices of performance drawer Kellie O'Dempsey, installation butoh artist Megan White and sonic artist Luke Jaaniste in a new collaborative work. The Laundry Artspace is proud to present the premiere performance of *Lightning Field* as part of BARI Festival, within a disheveled warehouse space in Teneriffe, amongst the grime of disused floors, the grit of recent graffiti, and the darkness of night.

Kellie O'Dempsey's drawing practice is hybrid and diverse, incorporating projection, video, collage, architectural space, gestural line, site-specific installation and live art, through which she explores transformational processes through improvisation and happenstance. The performance drawing works invite the audience to engage directly with the visceral process of making. O'Dempsey's public and private productions aims to enable an inclusive form of cultural interaction via performance and play.

Megan White and Luke Jaaniste are the co-directors of Brisbane-based ensemble Theatre of Thunder. TOT intertwines butoh dance with immersive sound and atmospheric landscape. Raw and ambient sounds propel the body into a state of poetic rupture and transmutation, whilst illuminated smoke-bubble storms make palpable the fluid dynamic between the sound, body, architecture and audience.

This trio of Brisbane artists has half a century of practice between them, and have been featured in major festivals, exhibitions and workshops across Australia and overseas, including Asia Pacific Triennial QAGOMA, Museum of Contemporary Art, White Night Melbourne, MONA FOMO, Draw to Perform Symposium London, dLux, Art After Dark 18 Biennale of Sydney, Prague Quadrennial of Performance and Design, Perspectives on Hijikata Research Collective Japan and hosting international butoh master Kan Katsura. We look forward to experiencing the results of their hothouse fusion.

WEDNESDAY 19TH OCTOBER

BETWEEN YOU AND I

PRESENTED BY:

FAKE estate

ARTISTS:

Annie Macindoe

OPEN:

Wednesday 19th October -
Saturday the 5th November

6:00pm- 8:00pm Wednesday,
19th October (Opening night)

11:00am Saturday 5th November
CRITICAL BRUNCH

ADDRESS:

Metro Arts exhibition space
Level 2/109 Edward Street, Brisbane.

[FACEBOOK.COM/FAKEESTATEART/](https://www.facebook.com/FAKEESTATEART/)

Between you and i presents an excerpt of the artist's current exploration of video installation work that investigates themes of personal narrative surrounding loss and trauma and how these experiences can be poetically re-imagined. The work utilises language, moving image and sound to fragment and disrupt traditional linear narratives in order to conflate the spaces of memory and lived experience. The use of multiple video channels aims to heighten the audience's awareness of the complex process of comprehending isolated experiences of language and image as they attempt to piece fragments together.

SCRIBBLE SLAM

HOSTED BY:
Lincoln Savage

Scribble Slam is a live art battle between two artists held at Kerbside with a theme announced at the start of a 90 minute timer. Winners are chosen by two judges and a crowd vote.

ARTISTS:
Deane Featonby
Justin Livingston

OPEN:
6:00pm - 9:30pm, 20th October
(one night only)

ADDRESS:
Kerbside Bar,
Constance St (Ann St end),
Fortitude Valley, Brisbane.

FACEBOOK.COM/SCRIBBLESLAM



DOES NEW YORK EXIST?

Living Archives Wunderkammer #1,
1988-2016, AXIS Art Projects

PRESENTED BY:
ARI Remix

ARTIST:
Paul Andrew

OPEN:
20st – 22nd
6:00pm (opening night) 21st October

Gallery open Friday - Saturday
11:00am to 2:00pm

ADDRESS:
14 Helen St, Teneriffe, Brisbane.

**FACEBOOK.COM/
ARIREMIXPROJECT**



The Garage, Axis File, Lower East Side, New York, 1988
Photo title: Paul Andrew

Together Brisbane artist-run agents Jay Younger, Lehan Ramsay and Paul Andrew formed the documentary-style collaboration AXIS Art Projects in the winter of 1987. It was an evening of combined merriment and vehement spleen venting discontent about being “emerging” artists living and working in Joh Bjelke’s Brisbane, induced, for the greater measure, by a shared round of rebel rousing “Altered Mannhattans” on the fairy lit verandahs of a ramshackle Queenslander somewhere in dark Milton.

AXIS (Art X-tremists International Syndicate), was directly motivated by the guerilla impulse evident in the art scene throughout the 1980s, our project was intervention collaboration designed as antidote to many of the mainstream and outdated assertions and “grand narratives” prevailing at the time; that the only true artist was the hero artist, that only white straight men were true artists, that only city-based or city-born artists were true artists, that only mainstream museums, institutions and commercial galleries were of true cultural value, that only Melbourne and Sydney artists were the most significant and truest of artists, that New York was the only true “centre” for contemporary art of any true international merit.

Does New York Exist? was imagined more as a provocation than simply an artist collective project title.

THURSDAY 20TH OCTOBER

BARI FESTIVAL PUBLIC FORUM 2

**FUTURE - FUNDING, SPACES,
ENVIRONMENTS**

PRESENTED BY:

Corflute

OPEN:

Thursday 20th October

6:30pm Panel one: The climate of
ARI's: Politics and the environment.

7:30pm Drink break

7:45pm Panel two: The future of ARI's:
problems and political concepts.

ADDRESS:

Graffiti Room, Powerhouse
119 Lamington St,
New Farm, Brisbane.

EVENTBRITE

REGISTRATION REQUIRED

WWW.BARI.COM.AU/EVENTS

LIMITED SEATING

THE CLIMATE OF ARI'S: POLITICS AND THE ENVIRONMENT

This discussion will focus on the space in which Artist-run initiatives in Queensland have evolved and the impact that our unique climate has had on local visual arts culture.

Brisbane was once said to be a cultural backwater, as the graffiti on the South Bank cultural centre development boarding once said '95% of artists leave Brisbane, Why don't you?'. This panel looks at how ARI's and emerging artists are responding to the political climate and the sub-tropical climate of Brisbane. How do artists respond to the environment? How had the subtropical design inform the types of ARI's that have existed in Brisbane? Tracing ARI's from Queensland's 1980's and 1990's this panel will discuss the relevance of, political and creative economies that exist within ARI's.

CHAIR:

Ellie Buttrose (QAGOMA Associate Curator, Contemporary International Art)

PANELISTS:

Andrew McNamara (QUT Professor Visual Arts), Carl Dempster (ARI Patron Extraordinaire), Caitlin Franzmann (Artist and LEVEL Ari Member)

THE FUTURE OF ARI'S: PROBLEMS AND POLITICAL CONCEPTS

This discussion will focus on the political evolution in artist groups, and interrogate the future development of ARI's and visual culture in Brisbane and wider Australia.

Associate with historical groups like the Viennese Secessionists, Salon De Refusees, and the Australian Heidelberg group ARI's have developed out of a need for artists to work collectively, make art and exhibit art outside of the institutional confines that often restrict and commercialise artistic practices. How does the saturation of the emerging artist culture affect their related political movements? What has influenced the political climate in Brisbane?

CHAIR:

Amelia Barikin (UQ Lecturer in Art History, University of Queensland)

PANELISTS:

Maria Miranda (Artist and DECRA Research Fellow at VCA), Gordon Hookey (Artist and member of proppaNOW and Boomali), Courtney Pederson (QUT Head/Senior Lecturer of Visual Arts, and co-Director of LEVEL) and Sebastian Moody (Artist and member to multiple ARI's).

FRIDAY 21ST OCTOBER

HOME 2

PRESENTED BY:
IN Residence

ARTISTS:
Miranda Hine
Teagan Ramsay
Julia Scott Green
MARI'sa Georgiou

OPEN:
6:00pm - 9:00pm
Friday 21st October
(one night only)

ADDRESS:
14 Helen Street,
Teneriffe, Brisbane.

INRESIDENCE-ARI.COM



The ideal is a conception of something that is perfect - something that can only be achieved if all flaws are eliminated. We each construct, and continually strive to attain, our own ideal. This process is generally informed by our immediate surroundings. For example, in Queensland, you are encouraged to subscribe to an ideal method of living, one that involves working hard in order to one day own a home. The development and persistence of this shared mentality has resulted in the classification of the Queensland housing type as a structure symbolic of ideal living.

Home 2 will critique this notion of ideal living by examining the architecture of the renowned 'old Queensland'. The exhibition will feature the work of four emerging, Brisbane-based artists. Each participating artist will respond to a space typically found within, or in close proximity to a Queensland, by creating an artwork that engages with, and questions the significance of, that particular space.

The Bathroom: Miranda Hine
The Bedroom: Teagan Ramsay
The Sunroom: Julia Scott Green
The Backyard: MARI'sa Georgiou

Photo title: projected through the window onto a wall: James Barth / Getting ready for an endless summer (Real_Girl) 2016 / Image: IN Residence

FRIDAY 21ST OCTOBER

SHE'D SHED SHRED

PRESENTED BY:
KUNSTBUNKER

ARTIST:
Tayla Haggarty

OPEN:
6:00pm - 9:00pm
Friday 21st October
(one night only)

ADDRESS:
184 Waterworks Rd,
Ashgrove, Brisbane.

[FACEBOOK.COM/
KUNSTBUNKERARI](https://www.facebook.com/KUNSTBUNKERARI)



Photo title: Formula, performance installation, collaboration with and Ryan Fraser, rope, table, fluorescent tube lights, naked models, harness's. Ryan Fraser, 2014.

She'd shed shred is a performance installation by Brisbane artist Tayla Haggarty, which delves into an investigation of 'sameness' and is constructed in direct response to the exhibition space. The work will be contingent on the physical supports of the building and will feature an even amount of female participants balancing on 3-metre hardwood planks. Each performer will be suspended wearing only a climbing harness and balanced at eye level against each other's weight. Constructed walls will frame this performance within the space to present an elongated blueprint of the artist's sizeable shared domestic wardrobe. This will create a space for the viewer to navigate that is both balanced yet uncomfortably unstable and collected, yet playfully riddled with tension. The use of these specific formal constructions and subtle visual metaphors will be demonstrated in an attempt to archive personal lived experience. Through developing this scene, the work aims to openly critique the complexity of duality, along side the tension and balance perceived within same sex relationships with those both in and outside the queer community.

SATURDAY 22ND OCTOBER

FORECASTING THE ANTHROPOCENE

PRESENTED BY:

>3 (Greater than 3 collective)

OPEN:

6:00 - 9:00pm

Saturday 22nd October
(one night only)

ARTISTS:

Caroline Austin
Mabel Frautschi
Fiona Jeanne
Grisard
Peter Thiedeke

ADDRESS:

Spring Hill Baths
14 Torrington Street,
Spring Hill, Brisbane.



Using the ancient practice of astrology, >3 has collaborated with Argentinian Astrologer Corina Mascotti to develop an astrological map that considers the impact and significance of disruptive events on each of us, within an interconnected world. Using the movement of the planets and stars, this map provides an alternative framework with which to consider the impact and significance of disruptive events that are driven by rapid changes in the environment, industry, technology, wars, migration and climate. The work aims to reflect on the philosophical, psychological and technological implications of this new cultural geological epoch or era known as the Anthropocene.

SUNDAY 23RD OCTOBER

SUBMERGENCY: IMMERSIVE SOUND & SWIMMING EVENT

PRESENTED BY:

Mesmerism Inc

ARTISTS:

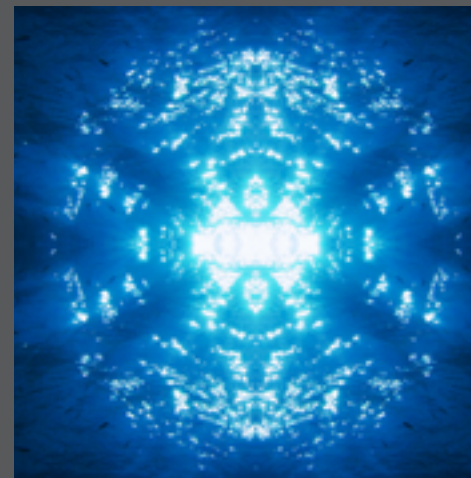
Luke Janisste, Toby Gifford

OPEN:

6:30pm - 8:30pm, Sunday 23rd October
(one night only)

ADDRESS:

Spring Hill Baths, 14 Torrington St, Spring Hill, Brisbane.



Submergency is a night of immersive sound and swimming, with multi-channel surround-sound music-scapes created by some of Brisbane's most geometrically and spatially-attuned sonic artists, Luke Jaaniste and Toby Gifford. Sound is spatial. It is vibration within space. More so, it is vibration that actually makes space—compression waves happening in varying degrees of oscillation, resonance and dispersion. Not exactly the same as the traversal waves that go across the surface of oceans, rivers and pools. But both are palpable fibrillations of rhythmic vibes, nonetheless. One envelops the other.

Submergency dives deep into the material and bodily quality of sound and water, inviting two artists to present new work for building-sized multiple-speaker arrays, and inviting the audience to literally bathe in the municipal water below and the musicalised air above.

This event is hosted by MESMERISM INC, a new artist-run production house curating events, ideas and publications with a focus on bodily mesmerisation (wow), re-orientations of public space (zone out), non-institutional forms of social bonding (love) and artistic research (hmmm).

LUKE JAANISTE is a trained classical composer, sonic artist, visual installation and photo artist, community facilitator, co-director of Theatre of Thunder and Super Critical Mass, and artistic director of Mesmerism Inc.

TOBY GIFFORD is a sound artist, generative code developer, digital performer, dj and clarinettist, who has worked as research fellow and lecturer in music technology at the Queensland Conservatorium.

Please bring your swimmers and towel.

SPECIAL THANKS TO ALL OUR PARTICIPATING
ARI'S AND YOUR CONTINUOUS HARD WORK TO
MAKE BRISBANE A BETTER PLACE

GET BEHIND BARI

WWW.BARI.COM.AU

PROGRAM DESIGN STEPHANIEANTILL.COM



BRISBANE
POWERHOUSE JUGGLERS
ARTS



THIS PROJECT IS SUPPORTED BY THE QUEENSLAND GOVERNMENT
THROUGH ARTS QUEENSLAND.